

Cruse & Associates

From: "Cruse & Associates" <cruseandassoc@kvalley.com>
Date: Wednesday, February 20, 2019 11:21 AM
To: "FILE"
Subject: Three Bar G Boundary Line Adjustment - TPNs 607834, 927834, and 117834

Narrative – 3 lot boundary line adjustment of tax parcel numbers 607834, 927834 and 117834 that adjusts the existing boundary to eliminate the intervening ownership. All parcels are existing range lands that are undeveloped with an existing cell tower on TPN 117834. The proposed boundaries will meet all requirements under current zoning code. See application maps for full details.

Existing Descriptions:

A portion of Section 30, T 19 N, R 17 E, WM. See title report for full description.

Proposed Descriptions:

Lot 1, 2, and 3 of the survey to be recorded after initial BLA application review and authorization to record has been granted by the planner.

Thanks,
Chris Cruse P.L.S.
Cruse and Associates
217 East 4th Ave.
P.O. Box 959
Ellensburg, WA 98926
(509) 962-8242 Office
(509) 962-8238 Fax
cruseandassoc@kvalley.com

RECEIVED
MAY 16 2019
Kittitas County CDS

Kittitas County COMPAS Map

Existing



Date: 2/20/2019

Disclaimer:

Kittitas County makes every effort to produce and publish the most current and accurate information possible. No warranties, expressed or implied, are provided for the data, its use, or its interpretation. Kittitas County does not guarantee the accuracy of the material contained herein and is not responsible for any use, misuse or representations by others regarding this information or its derivatives.

1 inch = 752 feet
 Relative Scale 1:9,028



RECEIVED
 MAY 16 2019
 Kittitas County CDS

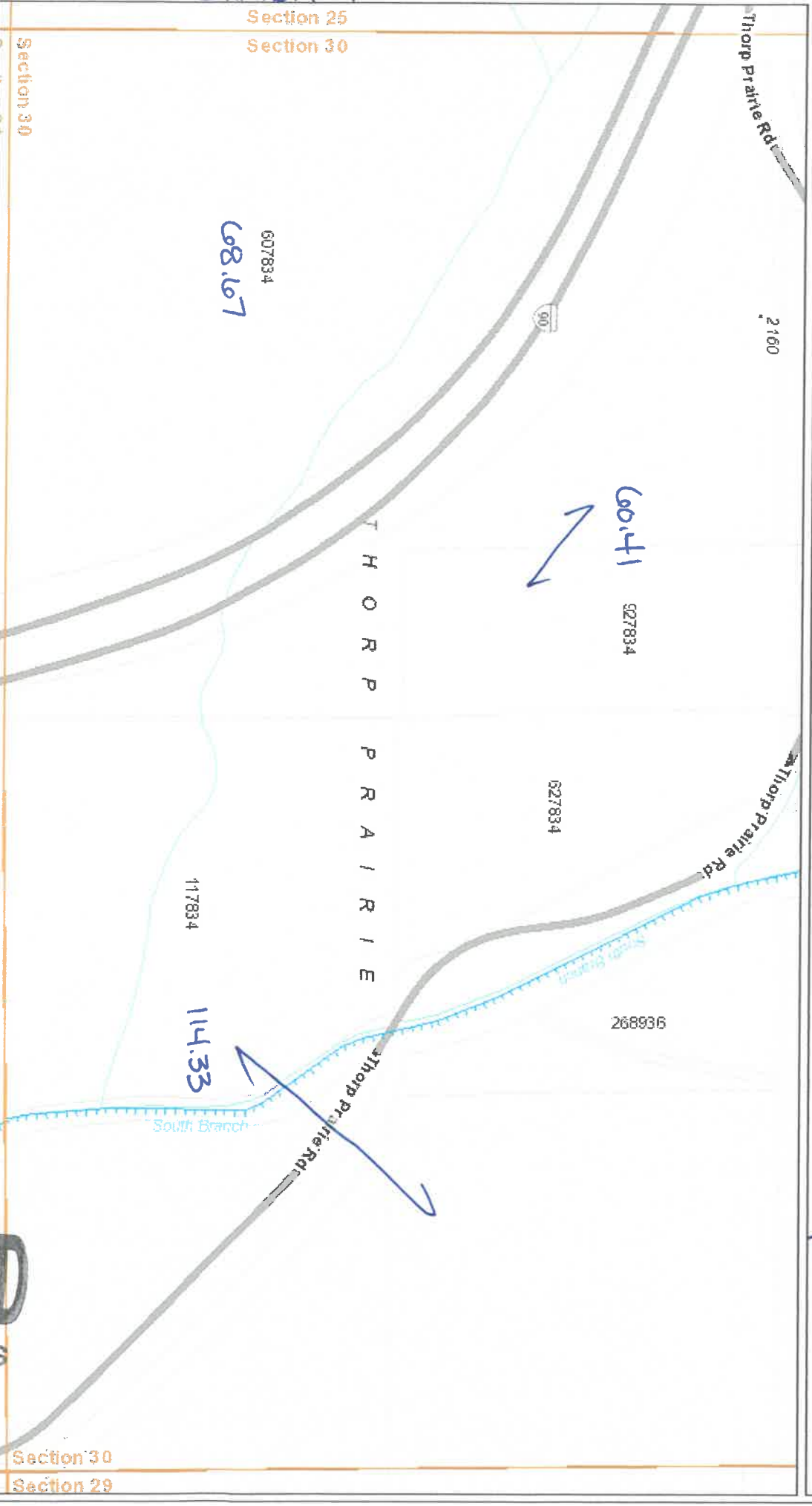
Kittitas County COMPAS Map

Proposed

30+4

Exhibit A

Section 25
Section 30



Date: 2/20/2019

Disclaimer:
 Kittitas County makes every effort to produce and publish the most current and accurate information possible. No warranties, expressed or implied, are provided for the data, its use, or its interpretation. Kittitas County does not guarantee the accuracy of the material contained herein and is not responsible for any use, misuse or representations by others regarding this information or its derivatives.



1 inch = 752 feet
 Relative Scale 1:9,028

RECEIVED
 MAY 16 2019
 Kittitas County CDS

